

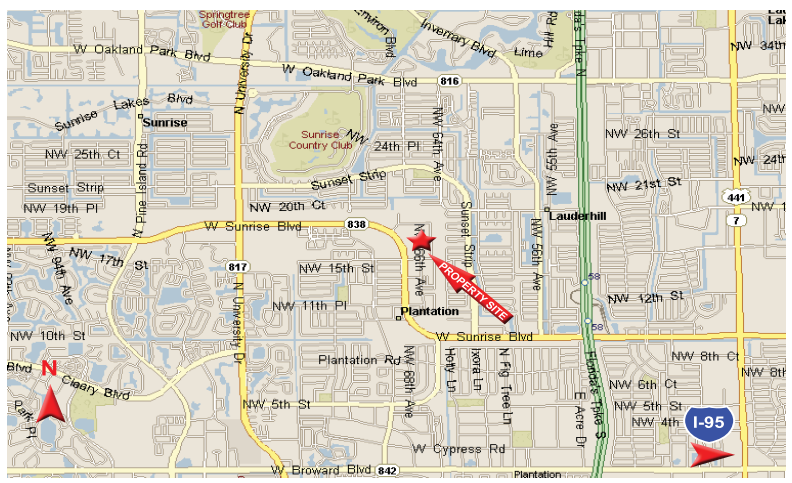


OFFICE SPACE AVAILABLE **FOR LEASE**
 1700 NW 66th Avenue, Plantation, FL 33313

AVAILABLE SPACE

- Suite 105 @ +/-2,760 S.F. -\$6.00 psf NNN
- Suite 106 @ +/-5,000 S.F. -\$6.00 psf NNN
- Suite 112 @ +/-8,300 S.F. -\$5.00 psf NNN

• 2013 Estimated Operating Expenses @ \$5.80 psf



For more information, please contact:

Judy Dolan
 Vice President
 JDolan@bergercommercial.com
 Direct: 954.652.2036

Keith R. Graves, P.A., CCIM
 Principal
 KGraves@bergercommercial.com
 Direct: 954.652.2031

Berger Commercial Realty Corp.
 1600 Southeast 17th Street, Suite 200, Fort Lauderdale, FL 33316
 Phone: 954.358.0900 ■ Fax: 954.358.0901 ■ www.bergercommercial.com



COMMERCIAL BROKERAGE AND PROPERTY MANAGEMENT

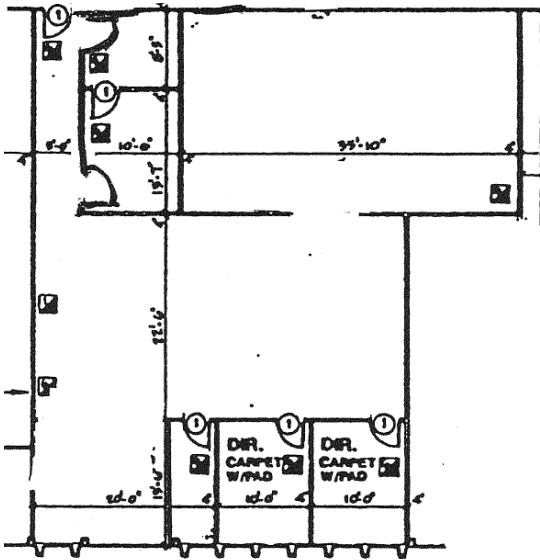
Information furnished regarding this property is from sources deemed reliable, but no warranty or representation as to the accuracy thereof and it is submitted subject to errors, omissions, prior sale, lease or withdrawal without prior notice.

OFFICE SPACE AVAILABLE

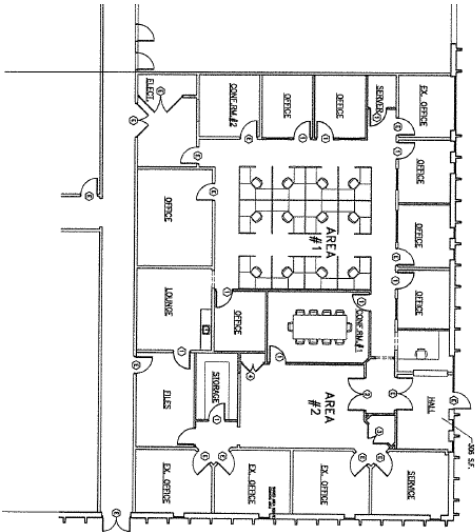
1700 NW 66th Avenue, Plantation, FL 33313

FOR LEASE

Suite 105
2,760 SF



Suite 106
Suite 5,000 SF



Suite 112
Suite 8,300 SF



BUILDING FEATURES

- Central Broward County location, close proximity to Florida's Turnpike, Sawgrass Expressway and I-95.
- Close to restaurants and retail stores.
- Campus like setting
- Immediate occupancy
- Twin-T construction
- Ample parking
- Zoned I-LP-City of Plantation

For more information, please contact:

Judy Dolan
Vice President
JDolan@bergercommercial.com
Direct: 954.652.2036

Keith R. Graves, P.A., CCIM
Principal
KGraves@bergercommercial.com
Direct: 954.652.2031



Berger Commercial Realty Corp.
1600 Southeast 17th Street, Suite 200, Fort Lauderdale, FL 33316
Phone: 954.358.0900 ■ Fax: 954.358.0901 ■ www.bergercommercial.com

Information furnished regarding this property is from sources deemed reliable, but no warranty or representation as to the accuracy thereof and it is submitted subject to errors, omissions, prior sale, lease or withdrawal without prior notice.